

Repair of 35 V 100 uFd electrolytic capacitor on D-20 board.

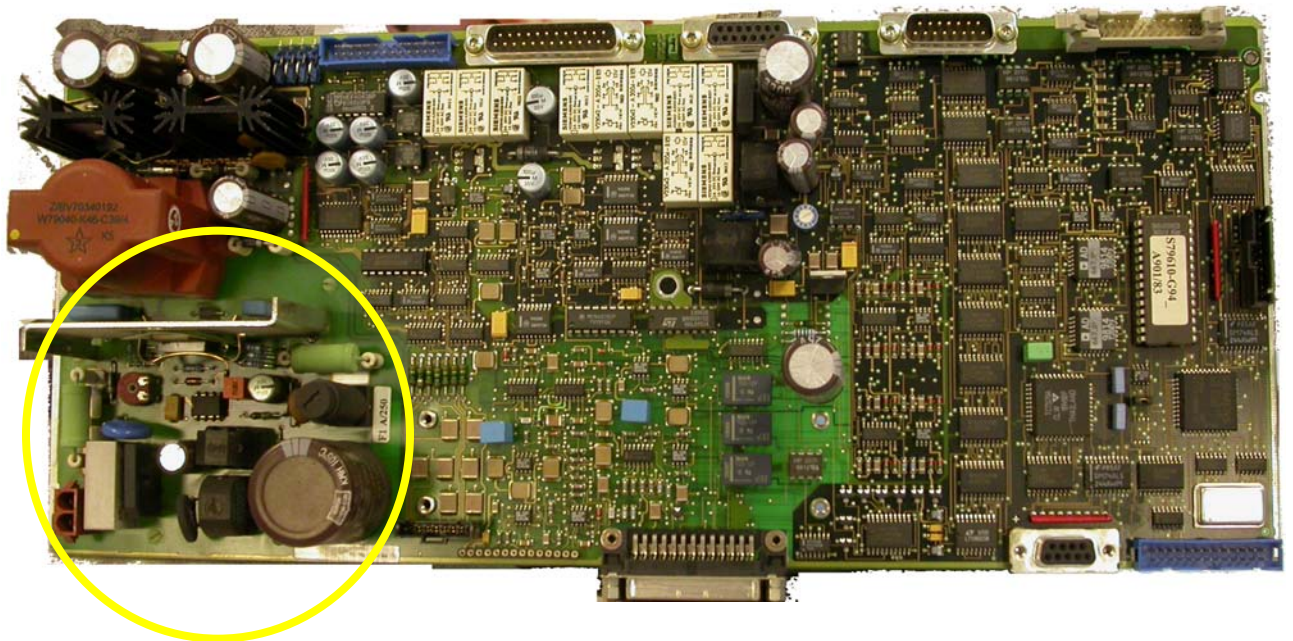
The failure mode of the D-20 board is reported as Error code 5 on the LCD display of the X-ray generator.

Two error modes are often reported in two alternate states: a) The X-ray generator power will turn on but to standby mode only, any further power up reports error code 5 b)., when turning on the X-ray generator, it shuts down immediately with error code 5

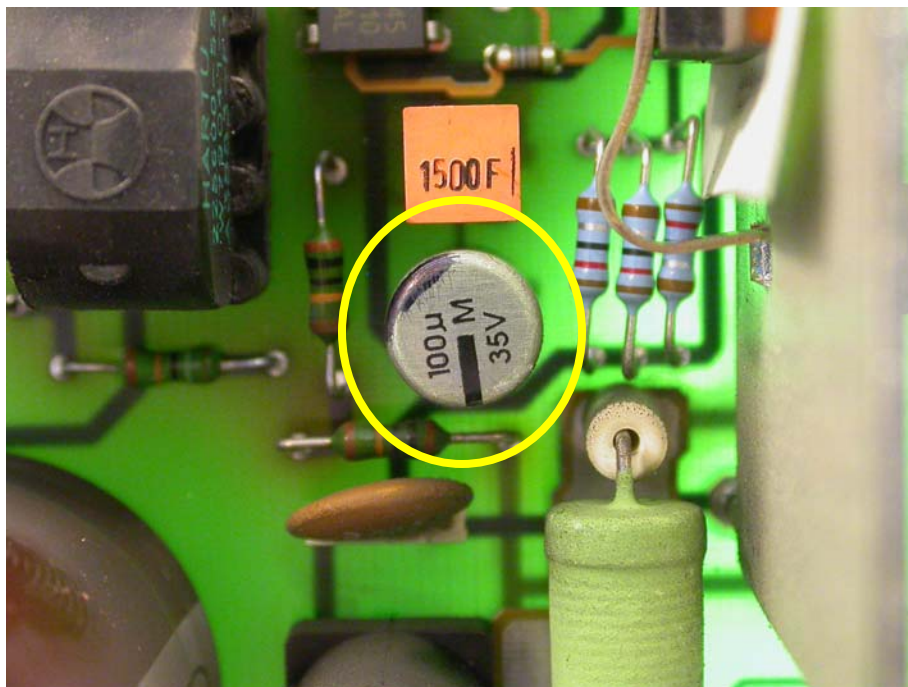
Typical values of Hcu = High # i.e. 5.9
Normal stand by = 1.9

Fix to error code 5.

The D-20 inverter board for the K710/K760 is shown in the picture below:

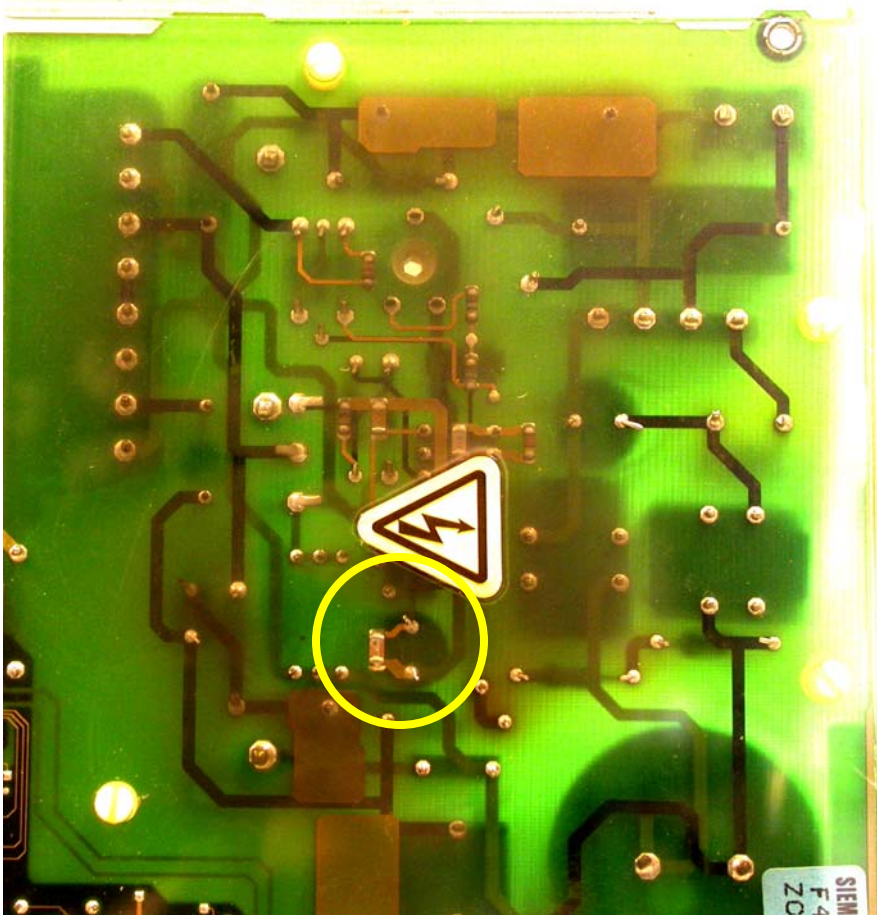


The following region of the D-20 card is magnified and shows the 35 V 100 uFd electrolytic surface mount capacitor that a listed failure on this D-20 board.



The 35 V 100 μ F electrolytic capacitor is replaced with a 50 v 100 μ F electrolytic alum capacitor with radial leads.

The corresponding side of this surface mount board is shown below.



The circled area indicates the pin out position for the capacitor for soldering.